

Public Presentation on the Spotted Lanternfly, a New Invasive Bug

Learn about the Spotted Lanternfly that is threatening our local horticulture and what you can do to protect your property and help stop its spread.



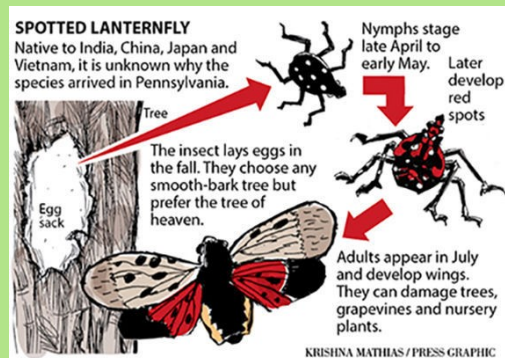
When: Monday, June 11 from 7:30 to 8:30 PM

Where: Phoenixville Borough Hall, 351 Bridge St., Third Floor (free parking)

Presenter: Sally Sue Richmond, Penn State Extension Master Gardener

Sponsored by: Phoenixville Tree Advisory Commission

Supported by: Phoenixville Green Team & Phoenixville Area Tree Tender Volunteers



Spotted Lanternfly (*Lycorma delicatula*) is a new invasive insect found in southeastern PA, the only place in the US where it is known to exist. Native to parts of Asia, it was discovered in Berks County in 2014, and is slowly spreading to other counties. Spotted lanternfly feed on a wide range of plants including maple, willow, staghorn sumac, birch, grapes, and many others. They pose major threat to Pennsylvania agriculture, including the grape, tree-fruit, hardwood and nursery industries.

While the Penna Dept. of Agriculture and Penn State Agricultural Extension are actively looking for solutions to help stop the insects' spread and save agricultural crops from serious damage, concerned citizens are the greatest resource for containing and controlling this potentially devastating pest. Learn about spotted lanternfly, the quarantine, and what you can do to help.

Speaker: Sally Sue Richmond, Master Gardener, Montgomery County

Sally Sue Richmond is a Master Gardener, one of a group of volunteers supporting the outreach mission of Penn State Cooperative Extension. She has been an avid gardener for over 30+ years and ran a small gardening business for 8 years. When not volunteering or working in her own garden, she is a Sr. Lecturer in Information Science at Penn State Great Valley in Malvern, PA.